

- PEIR Assessment Area
- Solar Development Sites
 - Cable Corridor Options Area
 - Cable Corridor Construction Compound
 - Land Not Used or Acquired for Proposed Development
 - LVIA Study Area (3km)
 - 275KV Substation ZTV (3km Around Solar Development Sites Only)
 - Sites ZTV (3km Around Solar Development Sites Only)
 - LVIA Viewpoints

A3

ZTVs have been modelled using the 'Viewshed' tool in ESRI ArcMap GIS Software which shows areas from which the Proposed Development is theoretically visible or not visible. The ZTV was prepared using digital terrain model (DTM) data with a resolution of 1m. The DTM includes heights of objects, such as vehicles, buildings and vegetation, as well as the terrain surface where the first or only return was the ground. It is based on maximum solar panel heights of 4.5m. The Maximum Substation height is 13m. For all of ZTVs an assumed viewing height of 1.7m above ground level has been used to simulate the eye level of a person at the top of the range set out in paragraph 6.11 of GLVIA3 to represent the worst-case scenario.

ZTVs are based on information provided in the Outline Site Layout Plan OSLP v3 28.03.25, including proposed field locations of the 275KV substation



Coordinate System: British National Grid
World Topographic Map: Esri UK, Esri, TomTom, Garmin, Foursquare, GeoTechnologies, Inc, METI/NASA, USGS
© Environment Agency copyright and/or database right 2022. All rights reserved.

Metres					
0 500 1,000					
P01	05/06/2025	CMCK	ACAR	ACOX	KHAR
Rev	Date	By	Chkd	Appd	Authd



Drawing Title
Figure 10.4.1
Zone of Theoretical Visibility (ZTV) - DTM
Sheet 2 of 5

Client
Light Valley Solar Limited

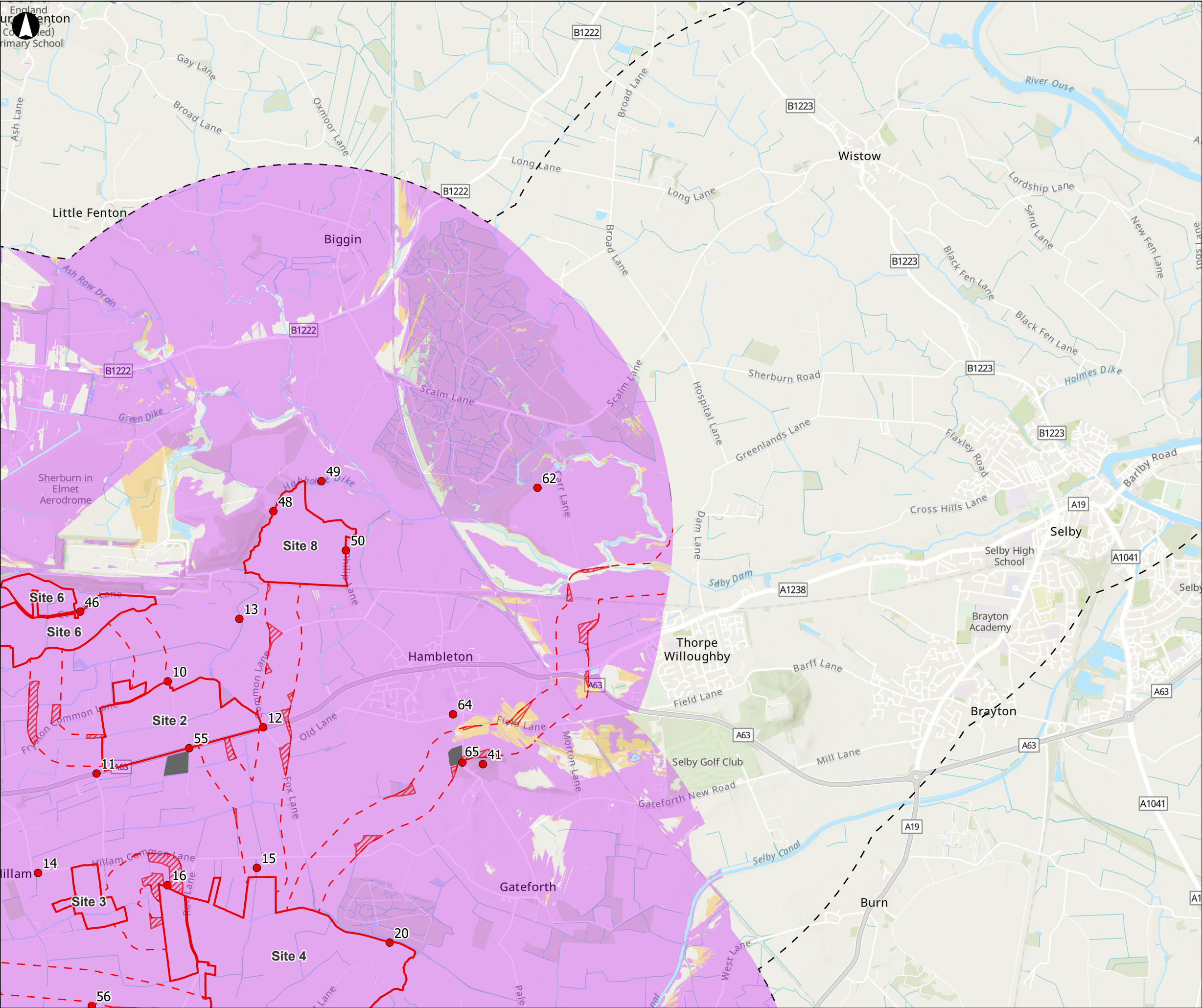
Project Name
Light Valley Solar

Scale at A3
1:35,000

Project Number
302939-00

Rev
P01

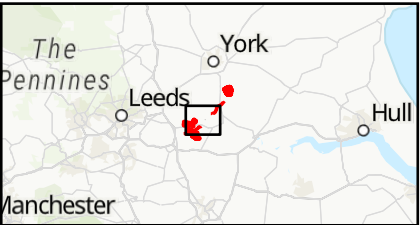
Drawing Number
LVS-302939-517



- PEIR Assessment Area
- Solar Development Sites
 - Cable Corridor Options Area
 - Cable Corridor Construction Compound
 - Land Not Used or Acquired for Proposed Development
 - LVI Study Area (3km)
 - 275KV Substation ZTV (3km Around Solar Development Sites Only)
 - Sites ZTV (3km Around Solar Development Sites Only)
 - LVI Viewpoints

ZTVs have been modelled using the 'Viewshed' tool in ESRI ArcMap GIS Software which shows areas from which the Proposed Development is theoretically visible or not visible. The ZTV was prepared using digital terrain model (DTM) data with a resolution of 1m. The DTM includes heights of objects, such as vehicles, buildings and vegetation, as well as the terrain surface where the first or only return was the ground. It is based on maximum solar panel heights of 4.5m. The Maximum Substation height is 13m. For all of ZTVs an assumed viewing height of 1.7m above ground level has been used to simulate the eye level of a person at the top of the range set out in paragraph 6.11 of GLVIA3 to represent the worst-case scenario.

ZTVs are based on information provided in the Outline Site Layout Plan OSLP v3 28.03.25, including proposed field locations of the 275KV substation



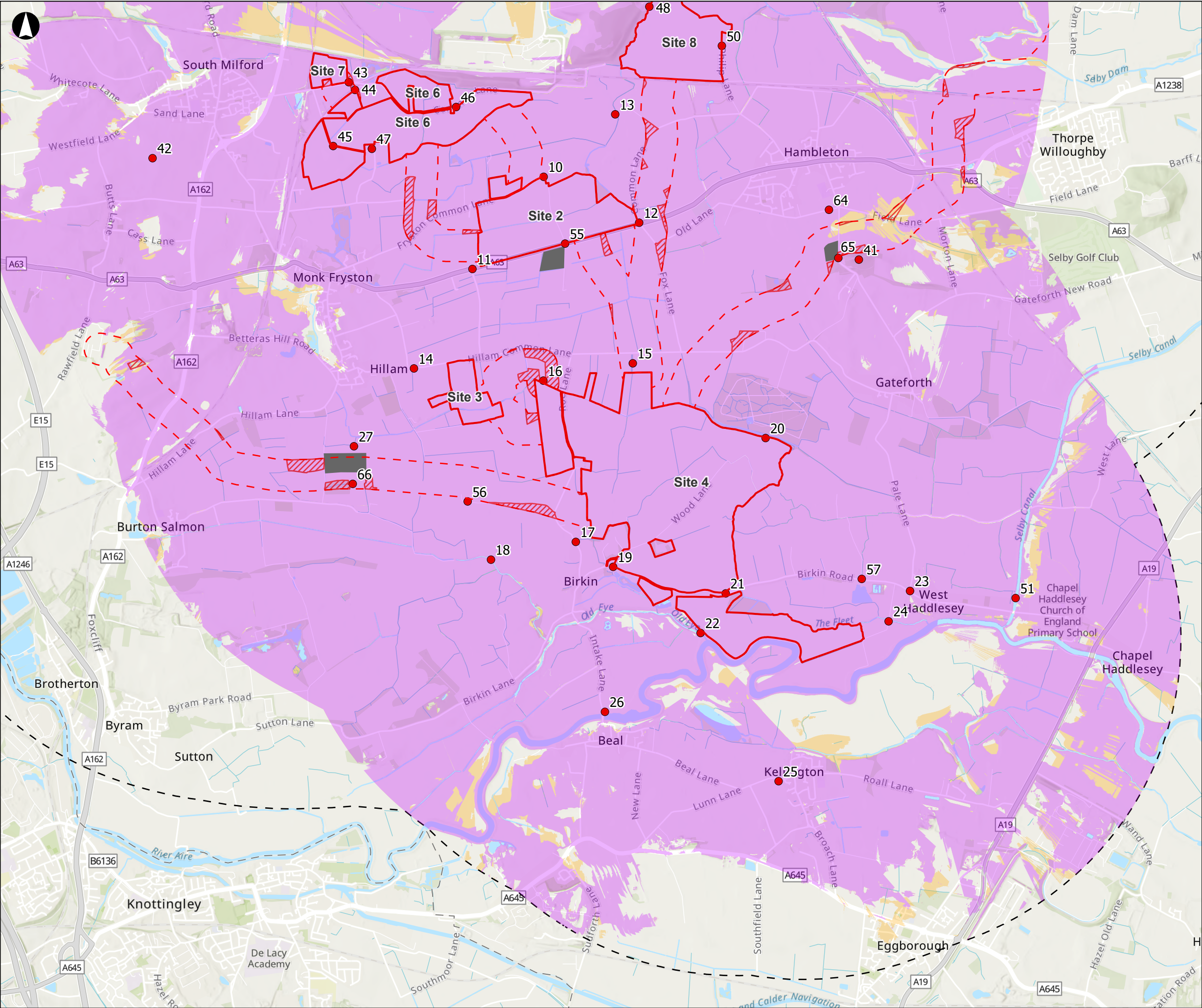
Coordinate System: British National Grid
World Topographic Map: Esri UK, Esri, TomTom, Garmin, Foursquare, GeoTechnologies, Inc, MET/NASA, USGS
© Environment Agency copyright and/or database right 2022. All rights reserved.

Metres					
0 500 1,000					
P01	05/06/2025	CMCK	ACAR	ACOX	KHAR
Rev	Date	By	Chkd	Appd	Authd



Drawing Title
Figure 10.4.1
Zone of Theoretical Visibility (ZTV) - DTM
Sheet 3 of 5

Client Light Valley Solar Limited	
Project Name Light Valley Solar	
Scale at A3 1:35,000	
Project Number 302939-00	Rev P01
Drawing Number LVS-302939-518	



PEIR Assessment Area

Solar Development Sites

Cable Corridor Options Area

Cable Corridor Construction Compound

Land Not Used or Acquired for Proposed Development

LVIA Study Area (3km)

275KV Substation ZTV (3km Around Solar Development Sites Only)

Sites ZTV (3km Around Solar Development Sites Only)

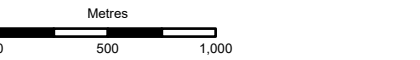
LVIA Viewpoints

ZTVs have been modelled using the 'Viewshed' tool in ESRI ArcMap GIS Software which shows areas from which the Proposed Development is theoretically visible or not visible. The ZTV was prepared using digital terrain model (DTM) data with a resolution of 1m. The DTM includes heights of objects, such as vehicles, buildings and vegetation, as well as the terrain surface where the first or only return was the ground. It is based on maximum solar panel heights of 4.5m. The Maximum Substation height is 13m. For all of ZTVs an assumed viewing height of 1.7m above ground level has been used to simulate the eye level of a person at the top of the range set out in paragraph 6.11 of GLVIA3 to represent the worst-case scenario.

ZTVs are based on information provided in the Outline Site Layout Plan OSLP v3 28.03.25, including proposed field locations of the 275KV substation



Coordinate System: British National Grid
World Topographic Map: Esri UK, Esri, TomTom, Garmin, Foursquare, GeoTechnologies, Inc, MET/INASA, USGS
© Environment Agency copyright and/or database right 2022. All rights reserved.



P01	05/06/2025	CMCK	ACAR	ACOX	KHAR
Rev	Date	By	Chkd	Appd	Authd



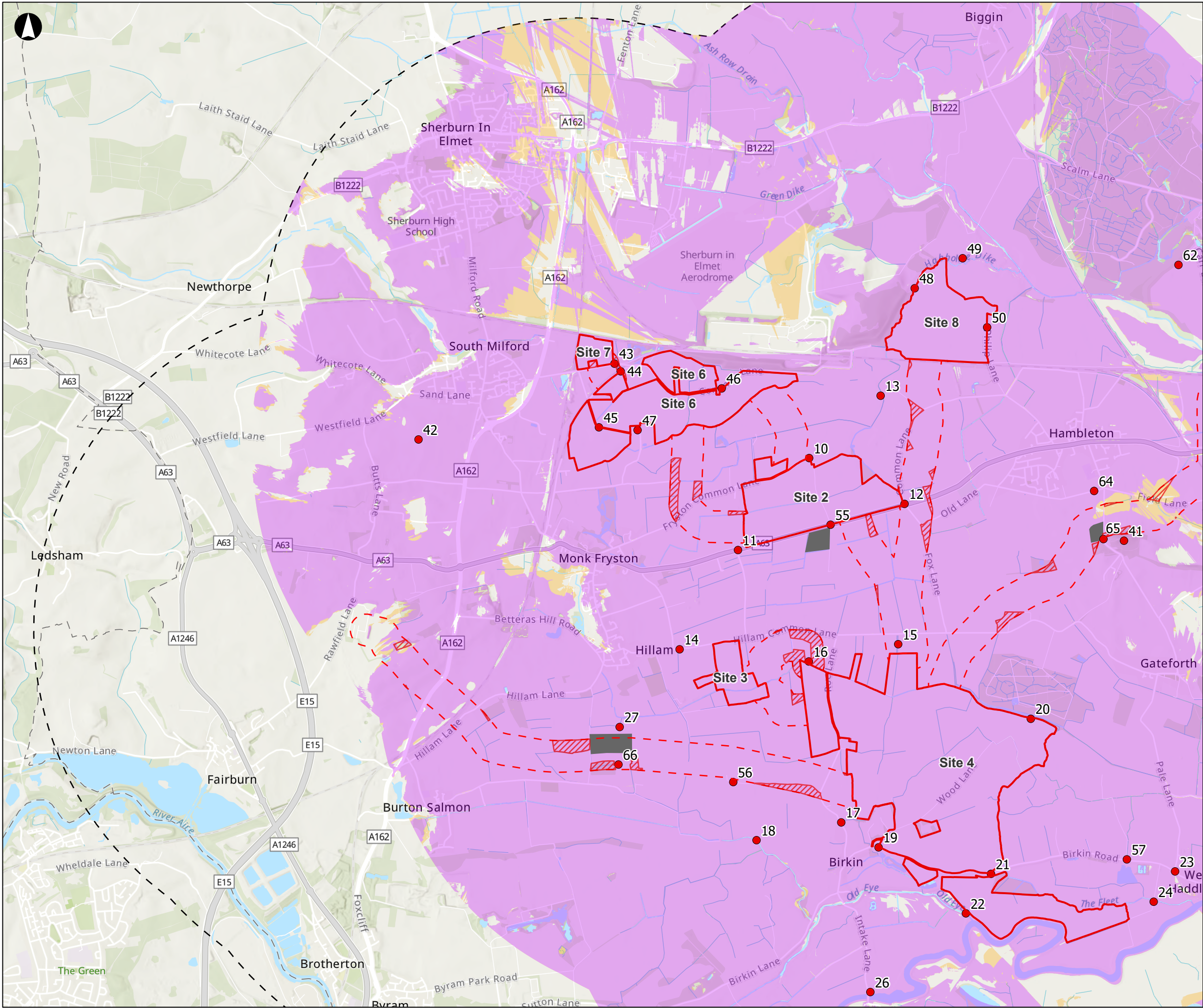
Drawing Title
Figure 10.4.1
Zone of Theoretical Visibility (ZTV) - DTM
Sheet 4 of 5

Client
Light Valley Solar Limited

Project Name
Light Valley Solar

Scale at A3
1:35,000

Project Number 302939-00	Rev P01
Drawing Number LVS-302939-519	



- PEIR Assessment Area
- Solar Development Sites
 - Cable Corridor Options Area
 - Cable Corridor Construction Compound
 - Land Not Used or Acquired for Proposed Development
 - LVIA Study Area (3km)
 - 275KV Substation ZTV (3km Around Solar Development Sites Only)
 - Sites ZTV (3km Around Solar Development Sites Only)
 - LVIA Viewpoints

ZTVs have been modelled using the 'Viewshed' tool in ESRI ArcMap GIS Software which shows areas from which the Proposed Development is theoretically visible or not visible. The ZTV was prepared using digital terrain model (DTM) data with a resolution of 1m. The DTM includes heights of objects, such as vehicles, buildings and vegetation, as well as the terrain surface where the first or only return was the ground. It is based on maximum solar panel heights of 4.5m. The Maximum Substation height is 13m. For all of ZTVs an assumed viewing height of 1.7m above ground level has been used to simulate the eye level of a person at the top of the range set out in paragraph 6.11 of GLVIA3 to represent the worst-case scenario.

ZTVs are based on information provided in the Outline Site Layout Plan OSLP v3 28.03.25, including proposed field locations of the 275KV substation



Coordinate System: British National Grid
World Topographic Map: Esri UK, Esri, TomTom, Garmin, Foursquare, GeoTechnologies, Inc, METI/NASA, USGS
© Environment Agency copyright and/or database right 2022. All rights reserved.

Metres					
0 500 1,000					
P01	05/06/2025	CMCK	ACAR	ACOX	KHAR
Rev	Date	By	Chkd	Appd	Authd



Drawing Title
Figure 10.4.1
Zone of Theoretical Visibility (ZTV) - DTM
Sheet 5 of 5

Client Light Valley Solar Limited	
Project Name Light Valley Solar	
Scale at A3 1:35,000	
Project Number 302939-00	Rev P01
Drawing Number LVS-302939-520	